



## TYL<sup>®</sup> - ChemForm Agent WB

Water Based Mould and Shutter Release Agent

201909

### DESCRIPTION

TYL<sup>®</sup>-ChemForm Agent WB is a specially formulated release agent to produce release properties, which are superior to those of conventional release agents. This is an emulsified blend of non-hazardous chemicals with a chemically active release agent supplied as a sprayable/brushable liquid, ready for direct application on site. The reactive components in TYL<sup>®</sup>-ChemForm Agent WB protect formwork and ensure an even color and texture in the cast concrete.

### ADVANTAGES

- Does not contain mineral oils
- Non-staining and non-toxic
- Rust inhibitor
- Contains a rust inhibiting additive
- Reduces blow holes
- Emulsion hence will leave a dry film after application
- Does not colour the concrete
- Can be used on steel, timber and plywood formwork
- Does not affect subsequent finishes applied to the concrete
- Can be used in precast concrete construction
- Does not affect the bond between the concrete and subsequent coverings or renders
- Does not affect the hardening of the concrete



### USES

- To provide quick, clean and easy stripping of moulds, shutters and formwork.
- To ensure clean release of the hardened concrete, to produce a uniform smooth, hard finish to the concrete.

### SPECIFICATION COMPLIANCE

- ASTM D 2111:1985, Method C.

### PHYSICAL & MECHANICAL

#### PROPERTIES

<u>Property</u>	<u>Typical Result</u>
Colour	Uniform Pale Straw
Homogeneity	Homogenous
Specific Gravity	1.01@25°C
Chloride Content	Nil

# TYL<sup>®</sup>-ChemForm Agent WB

Water Based Mould and Shutter Release Agent

201909

## MOULD PREPARATION

Steel moulds require no special treatment other than the removal of rust or oil, wetting out may be improved by lightly abrading the surface.

## PREPARATION OF USE MOULDS

Moulds previously treated with TYL<sup>®</sup>-ChemForm Agent WB will require only light brushing, as the presence of fine dust will improve absorption of TYL<sup>®</sup>-ChemForm Agent WB into the mould surface. This will usually result in improved release properties on the second and subsequent uses of the mould.

## APPLICATION

TYL<sup>®</sup>-ChemForm Agent WB may be applied by brush or conventional mould oil sprayer. If a mould oil sprayer is used, it is important that a fine nozzle be fitted, as this should be applied in a light continuous film. If it is over applied, excess material should be allowed to drain and then carefully removed from the bottom of the mould by means of a sponge or cloth. Pools of TYL<sup>®</sup>-ChemForm Agent WB should not be allowed to dry otherwise surface retardation of the concrete will occur. Unlike conventional mould oils, this does not possess residual release properties, so it is important that prior to each occasion of use, all areas of the mould are re-coated.

## COVERAGE

Around 40-80 sqm per liter

## PACKAGING

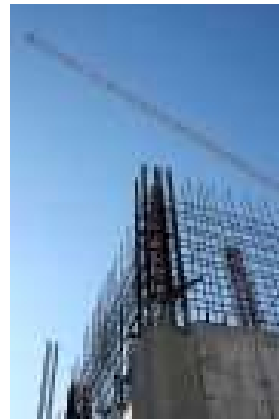
210 and 25 liter per drum

## LIMITATIONS

Care should be taken during use and storage to avoid contact with eyes, mouth and skin. Treat splashes to eyes and skin immediately. If accidentally ingested, seek immediate medical attention. Keep away from children and animals.

## STORAGE

TYL<sup>®</sup>-ChemForm Agent WB has a minimum shelf life of 12 months when stored in the original unopened containers under normal warehouse conditions.



## **Please enquire about our range of construction product**

The information and the recommendations relating to the application and end use if this product are given in good faith and are based on the information provided by the manufacturer of the product and/or the Company's current knowledge and experience in connection with the product when properly stored, handled and applied under normal conditions and no liability if final function at the job site is assumed. In practice, the differences in materials, substrates and actual site conditions are such that no warranty in respect of merchantability of or fitness for a particular purpose, nor any liability arising out of any legal relationship whatsoever, can be inferred either from this information, or from any written and/or oral recommendations, or from any other advice offered by the Company. No responsibility or Liability by the Company will be accepted for misuse, misreading or derivation from the recommended guidelines in respect of this product and the user shall determine the suitability of the product for his intended use and all risks and liability in connection therewith. The information contained in this brochure may change at any time without notice.

Room 1504, 15/F, Emperor Group Centre, No. 288 Hennessy Road, Wanchai, Hong Kong

Tel: 2121 4694

E-mail: sales@tyl.com.hk

Fax: 3020 6789

Website: www.tatyinltd.com

TECHNICAL DATA