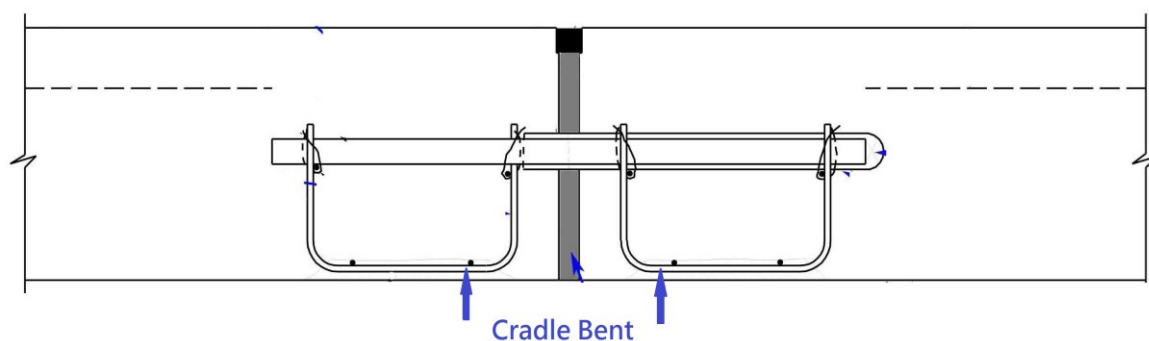


CRADLE BENT

6mm cradle bent wires are manufactured by 6.5mm cold reducing of hot rolled steel wire rod

DRAWING



SIZE

Dia (mm)	Length (mm)	Width (mm)	High (mm)
6	2000	125	135

*Special sizes are an available upon request

Please enquire about our range of construction product

The information and the recommendations relating to the application and end use if this product are given in good faith and are based on the information provided by the manufacturer of the product and/or the Company's current knowledge and experience in connection with the product when properly stored, handled and applied under normal conditions and no liability I final function at the job site is assumed. In practice, the differences in materials, substrates and actual site conditions are such that no warranty in respect of merchantability of or fitness for a particular purpose, nor any liability arising out of any legal relationship whatsoever, can be inferred either from this information, or from any written and/ or oral recommendations, or from any other advice offered by the Company. No responsibility or Liability by the Company will be accepted for misuse, misreading or derivation from the recommended guidelines in respect of this product and the user shall determine the suitability of the product for his intended use and all risks and liability in connection therewith. The information contained in this brochure may change at any time without notice.