



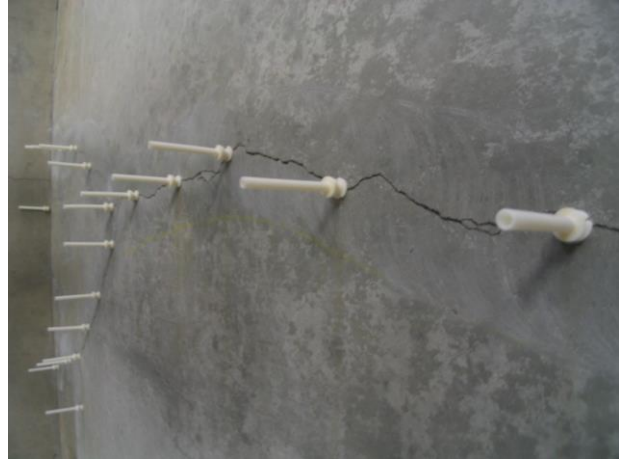
TYL[®]-SuperBond IG

Epoxy Injection Grout

2024021

DESCRIPTION

TYL[®]-SuperBond IG is a two component epoxy resin system supplied as Part A & Part B. It is a low modulus, extra low viscous, epoxy adhesive used as an injection grout where movement, shock minor or vibration is evident.



USAGE

- Injection of cracked concrete.
- Designed to be injected into cracks which will exhibit minor movement or shock or vibration.
- Used where maximum penetration into small, hairline cracks or fractures required.

ADVANTAGE

- Can be applied in slab cracks, delaminated grout beds, bearing pads, water reservoirs, and bridge decks.
- It is moisture insensitive allowing for injection into damp cracks.
- Its low viscosity allows maximum penetration into small, hairline cracks or fractures.
- After injection and in its cured state, TYL[®]-SuperBond IG returns structural integrity and protects reinforcement while at the same time compensating for movement and vibration.



PHYSICAL & MECHANICAL PROPERTIES

Property	Typical Results
Color	Clear
Specific gravity	1.06±0.02
Pot life @ 25°C	Min.30 minutes
Firm set time @ 25°C	3 hrs.

APPLICATION INSTRUCTIONS

As with any epoxy resin system, surface preparation is critical. Concrete surfaces or crack sidewalls to which this product is to be applied should be cleaned by air. This will ensure a superior bond.

Mix Part A and Part B fully to ensure it is mixed completely so that a uniform mix is obtained. With suitable equipment inject the pre-mixed TYL[®]-SuperBond IG to the areas where the repair needs to be carried out and allow it to cure for a minimum period of 3 days.

PACKAGING

1 liter pack.

HEALTH & SAFETY

TYL[®]-SuperBond IG does not fall into the hazard classifications of current regulations. However, it should not be swallowed or allowed to come into contact with skin and eyes. Suitable protective gloves and goggles should be worn. Splashes on the skin should be removed with water. In case of contact with eyes rinse immediately with plenty of water and seek medical advice. If swallowed seek medical attention immediately – do not induce vomiting.

STORAGE

TYL – SuperBond IG has a minimum shelf life of 12 months provided it is stored under cover, out of direct sunlight.

Please enquire about our range of construction product

The information and the recommendations relating to the application and end use of this product are given in good faith and are based on the information provided by the manufacturer of the product and/or the Company's current knowledge and experience in connection with the product when properly stored, handled and applied under normal conditions and no liability of final function at the job site is assumed. In practice, the differences in materials, substrates and actual site conditions are such that no warranty in respect of merchantability of or fitness for a particular purpose, nor any liability arising out of any legal relationship whatsoever, can be inferred either from this information, or from any written and/or oral recommendations, or from any other advice offered by the Company. No responsibility or Liability by the Company will be accepted for misuse, misreading or derivation from the recommended guidelines in respect of this product and the user shall determine the suitability of the product for his intended use and all risks and liability in connection therewith. The information contained in this brochure may change at any time without notice.