



TYL[®] - Dowel Bar

Concrete Doweling System

202402

DESCRIPTION

TYL[®]-Dowel Bar is plain round bar and the ability of a joint or crack in concrete pavement to transfer load from one slab to the next through shear action. Good load transfer improves concrete pavement performance by reducing tensile stresses in concrete, reducing corner deflection, and reducing differential deflection.

TYL[®]-Dowel Bar is a rehabilitation technique for increasing the load transfer capability of existing jointed Portland cement concrete pavement. This is accomplished by placing dowel bars across joint or cracks that exhibit poor load transfer. Our concrete doweling system consists of the following products:

- A mild steel or hot dip galvanized or stainless steel dowel bar
- A PVC dowel sleeve
- A Compressible Filler
- A cradle bent



ADVANTAGES

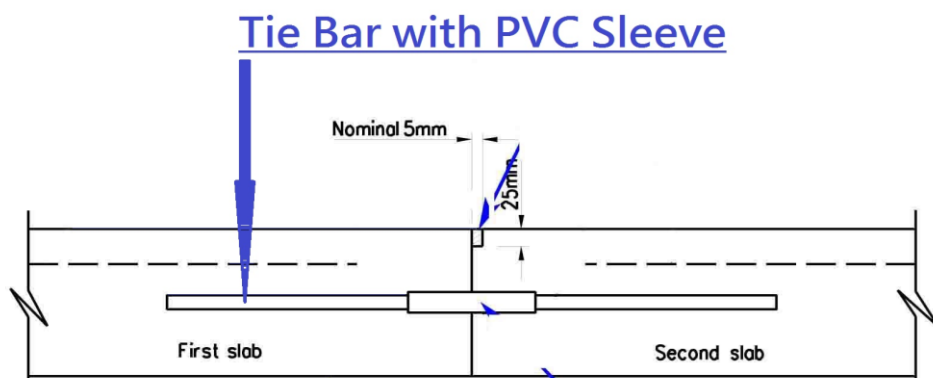
- Performance of the load transfer device
- Unique placement workability
- Exhibits little or no shrinkage
- Dowel bars and tie bars are straight
- Both ends are plain and sawn cut with all burrs removed
- Galvanization is applied after cutting

SPECIFICATION COMPLIANCE

- BS 4482
- BSEN ISO 1461:2009
- BSEN ISO 6892
- CS2:2012
- Grade 275
- BS EN 10025

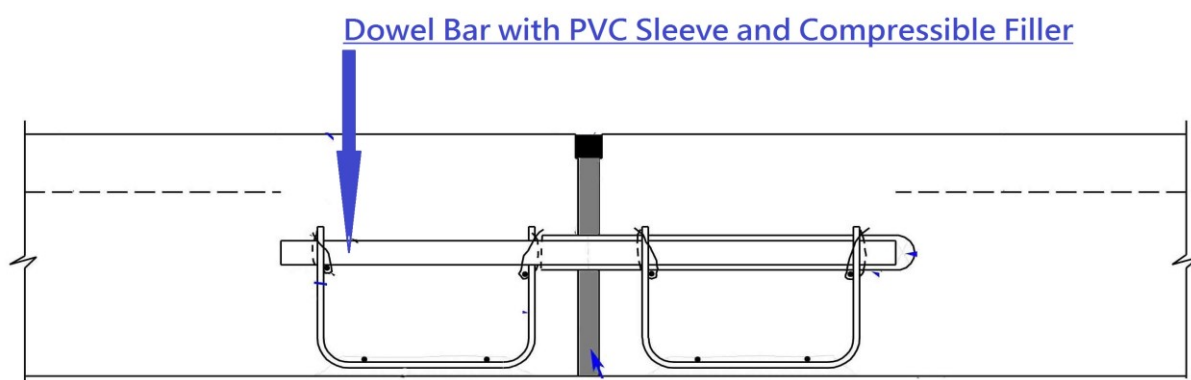


TIE BAR DRAWING



LONGITUDINAL JOINT

DOWEL BAR DRAWING



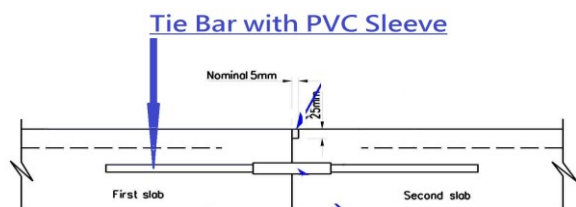
SIZE

| Bar Dia. (mm) | Length (mm) | Sleeve Dia (mm) | PVC Sleeve Length (mm) |
|------------------|----------------|--------------------|---------------------------|
| 6 | 300-6000 | | |
| 12 | 1000-6000 | R12 | 150/300 |
| 16 | 600-6000 | R16 | 400 |
| 20 | 600-6000 | R20 | 400 |
| 25 | 600-6000 | R25 | 400 / 450 |
| 32 | 600-6000 | R32 | 450 |
| 40 | 500-6000 | R40 | 550 |

PVC SLEEVE

PVC sleeve is made by Polyvinyl Chloride (PVC)

LONGITUDINAL JOINT

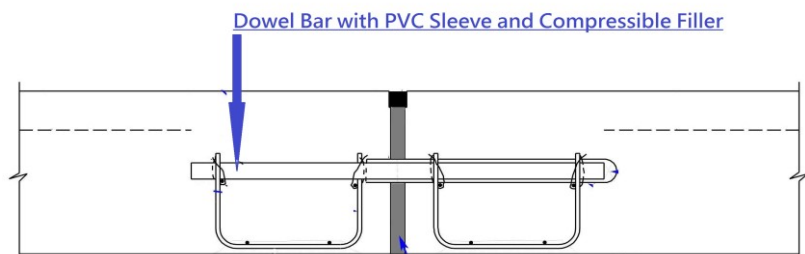


LONGITUDINAL JOINT



| <u>Dia</u> | <u>Length</u> | <u>Thickness</u> |
|------------|---------------|------------------|
| 12mm | 150mm | 0.9mm |

EXPANSION JOINT / MOVEMENT JOINT

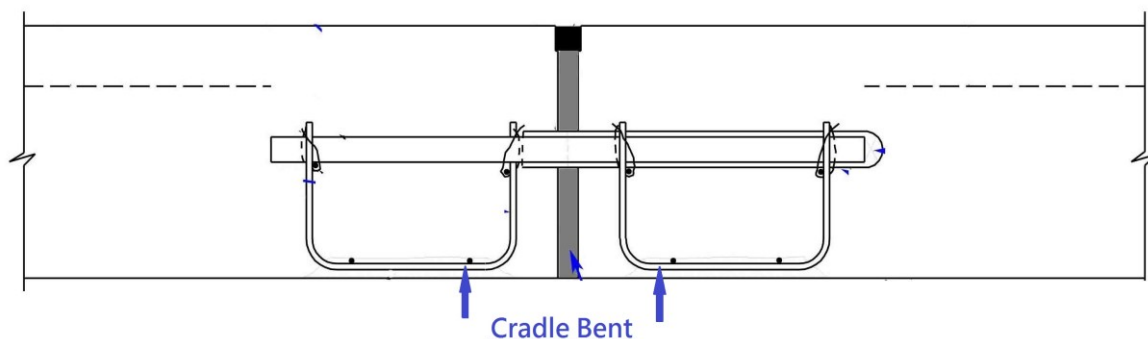


| <u>Dia</u> | <u>Length</u> | <u>Thickness</u> |
|------------|---------------|------------------|
| 20mm | 150mm | 0.9mm |
| 20mm | 300mm | 0.9mm |
| 20mm | 400mm | 0.9mm |
| 25mm | 400mm | 0.9mm |
| 25mm | 450mm | 0.9mm |
| 25mm | 500mm | 0.9mm |
| 32mm | 400mm | 0.9mm |

CRADLE BENT

6mm cradle bent wires are manufactured by 6.5mm cold reducing of hot rolled steel wire rod

DRAWING



SIZE

| Dia (mm) | Length (mm) | Width (mm) | High (mm) |
|-------------|----------------|---------------|--------------|
| 6 | 2000 | 125 | 135 |

*Special sizes are an available upon request

Please enquire about our range of construction product

The information and the recommendations relating to the application and end use if this product are given in good faith and are based on the information provided by the manufacturer of the product and/or the Company's current knowledge and experience in connection with the product when properly stored, handled and applied under normal conditions and no liability I final function at the job site is assumed. In practice, the differences in materials, substrates and actual site conditions are such that no warranty in respect of merchantability of or fitness for a particular purpose, nor any liability arising out of any legal relationship whatsoever, can be inferred either from this information, or from any written and/ or oral recommendations, or from any other advice offered by the Company. No responsibility or Liability by the Company will be accepted for misuse, misreading or derivation from the recommended guidelines in respect of this product and the user shall determine the suitability of the product for his intended use and all risks and liability in connection therewith. The information contained in this brochure may change at any time without notice.